

**ON-LINE ONLY
VOLUNTARY
DIVISION CLOSEOUT**

AUCTION

**MECHANICAL, HVAC CO. DIVISION CLOSURE •
FORKLIFTS • PLATE SHEAR • (2) OH CRANES •
14 SEACANS • 5 SITE TRAILERS • GEN. CONST. EQUIP.**

FIRST LOT BEGINS CLOSING: THURS., DEC. 16TH, 2021 - 10 AM

PLACE: 19469 92ND AVE., SURREY, BC • PREVIEW: WED., DEC. 15TH - 9AM - 4PM



2 NISSAN 50 FORKLIFTS



CROWN 3500# REACH TRUCK



HACO HYD. 1/4" X 10'



4 OF 5 SITE OFFICES



20' SEACANS



2 OVERHEAD CRANES

FORKLIFTS: Nissan Model MAP1F2A25LV 4050# Forklift, 3 stg. 169" lift w/ SS, propane, air tire, s/n AP1F2-9U1037 - ONLY 264 HOURS !!!; Nissan Model MPL02A25LV 4050# Forklift, 3 stg. 187 in. lift w SS, propane, air tire, s/n PL02--9H2780 ONLY 306 HOURS !!; Crown reach truck Model RR5210-35, 3500# CAP, 24 VOLT DC, 210" lift, side shift, S/N 1A311353 ONLY 400 HRS!; Komatsu electric forklift Model FB 15MH-2 , 2290# cap., 185 in. lift, SS, 36V c/w charger **PLATE SHEAR:** 2003 Haco HSLX 3006 hyd. shear - 10' x 6mm (.2362205 inches), 575v-3ph, Powered back gauge, s/n 67195; **OH CRANES:** (2) Coastal Pacific 5 ton x 37.2', 1 w/ Gantron hoist, 480v/3ph, 1 w/ Mizia hoist, 440v/3ph, 2 speeds all directions (Both Cranes were inspected in 2020 and were shop tested); (5) Site offices - (3) 10' X 40', 10' X 32', 10' X 30' ; Seacans - (13) 20', 6'; Large amount of Ridgid equipment - Roll groovers, 300 threaders, 2 bending and hole cutting units, Pipe vises and tri stands; 2 Victaulic groovers; pipe cutting and fabrication; **COMPRESSORS** - IR 50 HP screw, several port; 15 Job boxes; Ladders; Pallet racking with 2x6 wood inserts; Pallet jacks; Miller SRH-333 welder, (2) Maxstar 150 STL; NEW OA Smith 119 NG water heater; Core drill, core bits; Many Hilti etc. and other power tools; Floor drill press; Fans; Inventories of copper pipe and fittings, plastic pipe, black pipe and fittings, Redi rod; Pipe hangers; Fire extinguishers; Hand tools; Banding reel & tools; etc.

VISIT www.joinersales.com FOR MORE PHOTOS & SPECS

TERMS OF SALE: 18% BUYERS PREMIUM APPLIES. **PAYMENT:** FULL PAYMENT BY DAY FOLLOWING SALE BY DEBIT, (VISA, M/C to \$2000), CASH, BANK DRAFT, BANK WIRE TRANSFER, e-TRANSFER. **REMOVAL:** BY 5PM Tues., Dec. 21, 2021
ON-LINE SALE ONLY - LIVE WEBCAST - NO ON-SITE BIDDING

Joiner
SALES CORP
CONDUCTING
AUCTIONS & APPRAISALS
NATIONWIDE

HEAD OFFICE:

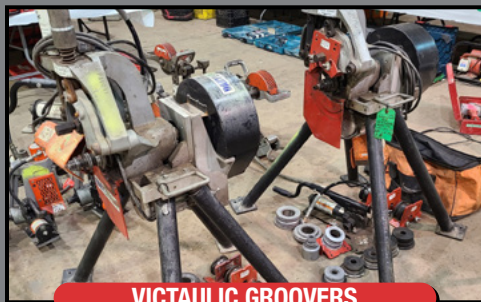
#103A - 31120 Peardonville Rd.
Abbotsford, B.C. V2T 6K7
Phone: (604) 852-8711
Fax: (604) 852-8721

Website: www.joinersales.com

ALBERTA:

#202 - 11830 111 Ave.
Edmonton, AB T5G 0E1
Phone: (780) 424-6230
Fax: (780) 489-2525

**INDUSTRIAL
AUCTIONEERS
— • —
MACHINERY
APPRAISERS**



VICTAULIC GROOVERS



KOMATSU 3000# ELEC.



CORE DRILL & BITS



5 RIDGID 300 THREADER



RIDGID 918 GROOVERS



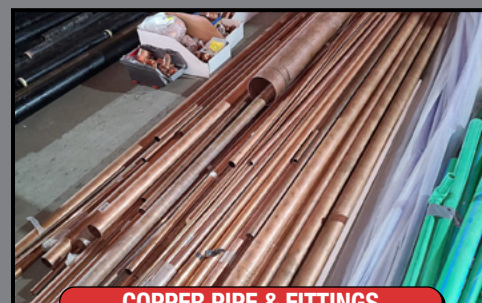
RIDGID PORTABLE ROLLERS



RIDGID TRI STANDS



PART VIEW OF LADDERS



COPPER PIPE & FITTINGS



JOB BOXES



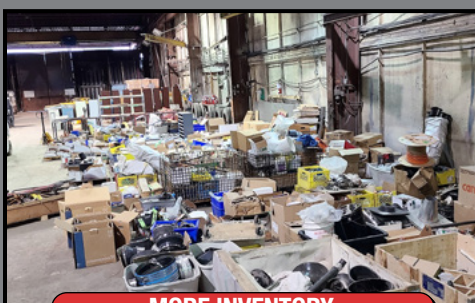
IR 50HP SCREW



119 GAL NG WATER HEATER



OVER VIEW OF INVENTORY



MORE INVENTORY



6' SEACAN



UNABLE TO ATTEND? Bid from your office in real time via the internet.

Register at www.bidspotter.com

SELLING OUT? SURPLUS EQUIP? NEED AN APPRAISAL?

WE CAN HELP! 604-308-8040

Connecting buyers & sellers since 1976 !